



www.sanova.co.za

Sanova Furniture (Pty) Ltd

Office: 010 825 5696 | Email: info@sanova.co.za

Unit 7 , The Arena, Capital Hill Commercial Estate
Midrand, Johannesburg
South Africa



CATA
L
LOG
PREMIUM RANGE
2025

At Sanova, we believe that great design enhances everyday living. Founded on a passion for quality craftsmanship and timeless aesthetics, Sanova specializes in curating spaces that inspire, comfort, and connect. From contemporary furniture to custom solutions, we bring modern elegance to life through thoughtful design and premium products.

INDEX

Excellent Range

Page

01 - 40

Musen Range

42 - 72

HO Range

74 - 108

Sanova



Artistic impression that works well!



Design inspiration comes from the world's hardest diamond - a three dimensional masterpiece of pure geometric beauty.

It is the perfect embodiment of science, technology, and aesthetics.

The Excellence Zhile Series grows on the diamond's striking form to capture ultimate beauty while inheriting its unparalleled hardness. This design perfectly reflects the courage and perseverance of a true leader.





Respect. Prestige. Privacy. Excellence

Honor is both status and principle. Steadiness is both presence and foundation.
Amid it all, I remain calm - unshaken, no matter how the wind blows.



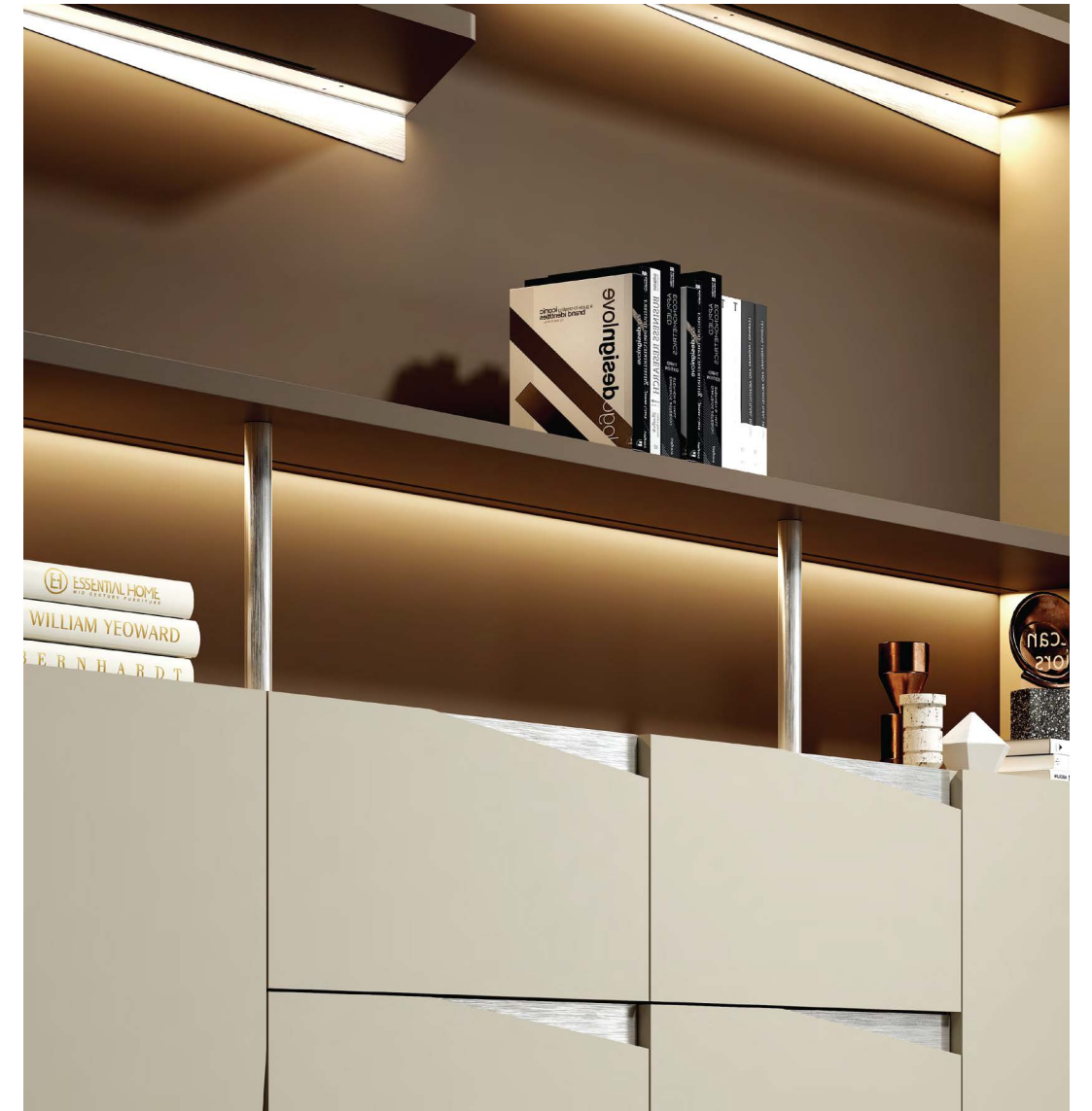
**The back cabinet is
full of geometric beauty**

Natural wood grains paired with brushed metal creates a refined, high-quality texture, bringing an avant-garde touch to the office space.

Geometric blocks, embodying a minimalist spirit, are stacked to form cabinets that maximize both display and storage functions.

A precision corner-notch closure challenges the conventional flat-opening mode, allowing seamless transitions between storage and display.



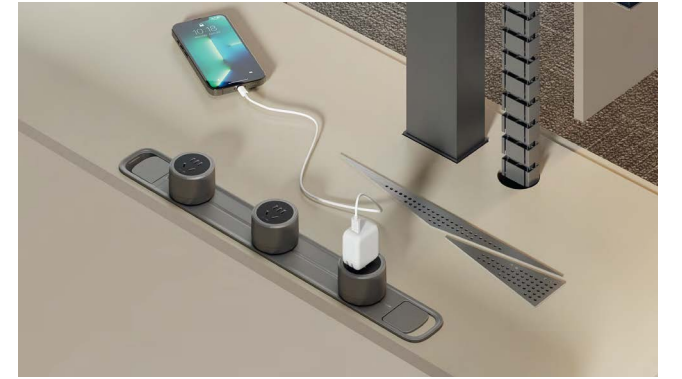


He is also strong and flexible

Stainless steel and natural wood unite in perfect harmony, blending strength with warmth. This duality gathers focus and draws the heart, while light and shadow dance across every surface, infusing the space with an atmosphere of pure artistry.



The ZHIJIE President Table extrudes resolute strength and unwavering stability. Commanding its own presence within the space, it embodies the extraordinary style of true leadership. Its a statement piece that defines authority, offering the exclusive privilege of work - and - living - at the pinnacle.



Mobile socket

The adapter socket can be inserted and moved at any position on the power track.



Ambient light

Together with visionary enterprise leaders, and supported by advanced intelligent technology, we rise to new heights. In the ebb and flow of each day, it offers a place to rest the weary body and a space to think strategically. Thoughtfully designed storage gathers and organizes even the most complex items, clearing the path for progress and success.



Free rise and fall

Together with enterprise innovators, accompanied by advanced intelligent technology to climb ahead. Between a rise and a fall, relax the tired body, help strategiki; A collection of put in, to accommodate the complex items, to open up the pace of clearing the road.





He is also strong and flexible

The universe is a perfect geometry masterpiece - a dance of exquisite forms gracefully spinned through the vastness of space







Top Power Supply



Integrated Ambient Lighting



Diamond-cut Legs



Geometric aesthetic diamond cutting

Geometry is often angular, carrying a sense of sharpness and strength. Yet, when it meets a softer, elevated breath of design, the contrast transform - everything becomes more captivating, more refined.









National style and elegant charm

When minimalist geometry is integrated into the tea space, the space is relaxed and creates a clean and comfortable atmosphere.







Forge ahead steadily and steadily

The intersection of simple and neat geometric lines Outlines the delicate side of the space without a trace of excess decoration, breaking the traditional appearance and hiding the fashionable style.





Jing executive space enjoy light luxury and elegance

The maximum size of the table is 2600mm, the wide table supports a strong atmosphere, and the warm and delicate wood texture is covered with a low-key and restrained coat. The so-called "big sound Xi sound elephant invisible", the more respect for nature without carving, the more compatible and inclusive tolerance.



Efficient meeting space

With modern office Spaces encouraging meaningful teamwork, it's time to add some efficiency to meetings. Starting from the spatial compatibility, complete size configuration is essential, simple and generous design is indispensable.





ZJ-T01-30 3000Wx2400Dx750H
ZJ-T01-27 2700Wx2400Dx750H



ZJ-T02-27 2680Wx2400Dx750H
ZJ-T02-24 2380Wx2400Dx750H



ZJ-T03-26 2600Wx2400Dx750H
ZJ-T03-24 2400Wx2400Dx750H



ZJ-FG-1000 1000Wx400Dx636H



ZJ-FG-450 450Wx450Dx600H



ZJ-CG-12 1200Wx400Dx875H



ZJ-CG-24 2400Wx400Dx1000H



ZJ-T04-22 2200Wx1600Dx750H
ZJ-T04-18 1800Wx1600Dx750H



ZJ-T05-16 1600Wx760Dx750H
ZJ-T05-14 1400Lx680Wx750H
ZJ-T05-12 1200Wx600Dx750H



ZJ-T06-26 2600Wx1800Dx750H
ZJ-T06-24 2400Wx1800Dx750H
ZJ-T06-22 2200Wx1800Dx750H



ZJ-C01-10 1000Wx700Dx300H



ZJ-C02-14 1400Wx700Dx450H
ZJ-C02-12 1200Wx600Dx450H



ZJ-C03-12 1200Wx700Dx390H



ZJ-H01-60 6000Wx1500Dx750H
ZJ-H01-48 4800Wx1500Dx750H
ZJ-H01-42 4200Wx1500Dx750H



ZJ-H02-24 2400Wx1100Dx750H
ZJ-H02-20 2000Wx900Dx750H
ZJ-H02-18 1800Wx900Dx750H



ZJ-H05-12 1200Wx1200Dx750H
ZJ-H05-10 1000Wx1000Dx750H



SD-701-F 1540Wx840Dx690H



Single
SD-701-1 1070Wx840Dx690H



Two seat
SD-701-2 1750Wx840Dx690H



ZJ-H03-36 3600W*1200D*750H
ZJ-H03-32 3200W*1200D*750H



ZJ-H04-24 2400W*1100D*750H
ZJ-H04-20 2000W*900D*750H



ZJ-CT-24 2400Wx900Dx750H



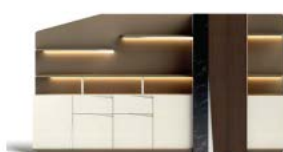
SD-701-3 2170Wx840Dx690H



FZ-8168-2 2060Wx850Dx850H



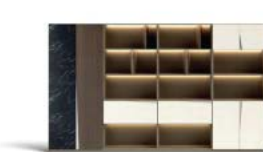
FZ-8168-1 970Wx850Dx850H



ZJ-G01-38 3800Wx450Dx2100H



ZJ-G02-32 3200Wx450Dx2100H



ZJ-G03-A+B+C 2400Lx420Wx2000H



WL-K-01 640Wx620Dx1210H



WL-K-02 640Wx620Cx910H



FZ-6A88 700Wx640Dx1320H



FZ-6C88 700Wx640Dx1030H



-6A81 640Wx600Dx1265H



ZJ-G03-A 800Wx420Dx2000H



ZJ-G03-B 800Wx420Dx2000H



ZJ-G03-C 800Wx420Dx2000H

Material List



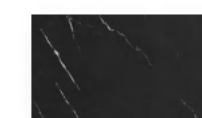
Madrid Walnut wood



Dusk Cloud Grey



Agate Grey



Nero Portoro Collection



Rose Grey

MUSEN



Wellness in wood // Forests Forever

CONCEPT

Musen - series

The entire range uses ash elements

Simple, elegant panels with clean, clean lines,

Give office furniture new vitality.

The overall simple and clean office furniture design has become the leading direction.

The color is elegant and full of design,

Abandon the heavy visual experience,

Making office spaces look more transparent has become a trend,

While advocating minimalism,

It also does not miss the important nature of functional practicality.

Warm and elegant, great value for money.

STYLISH /
OFFICE FURNITURE
Modern minimalist aesthetic

INTEGRATED FROM NATURE

WOOD





Science over the line, calmly office

Log style meets modern technology, wire box integrated upper and lower dual power supply, Type C, USB interface, etc. Everything you need for different devices.





Log table legs, gold slope

Ash solid wood table legs with gold slope,
Create a dynamic visual aesthetic while providing solid support for the table frame.





Back to nature and a comfortable experience

Simple design and wood style color matching,
 Bring a warm, comfortable, natural and harmonious atmosphere to the office space
 Optional movable cabinet and hanging chassis rack
 Convenient storage of office supplies and personal belongings,
 All while keeping the table and underside tidy





Beautiful view of "Liang" Chen

Well-designed table screen, with hanging slot function, to ensure the appearance of the same time, It has rich malleability and brings more possibilities to the space.



Lower beveled edge design

Tabletop lower beveled edge design, It's not just about aesthetics, Get a more gentle and comfortable experience when you are leaning on the table.





" 2+N = X "

The future is beautiful because it contains possibilities,
The staff position can be extended infinitely to adapt to the needs of more scenarios.



Store things reasonably and in an orderly manner

Reasonable storage space to provide storage protection for professionals,
It contributes to the presentation of a clean and tidy office environment.











// Standard Product Unit



MS-T01-22 2200W*1800D*750H
MS-T01-20 2000W*1800D*750H



MS-T02-18 1800W*1600D*750H
MS-T02-16 1600W*1600D*750H



MS-T03-18 1800W*1600D*750H
MS-T03-16 1600W*1600D*750H



MS-T04-14 1400W*600D*750H
MS-T04-12 1200W*600D*750H



MS-G01 2400W*400D*1720H



MS-2006X 三门左
1200W*400D*1900H



MS-2007X 两门
800W*400D*1900H



MS-2008X 三门右
1200W*400D*1900H



MS-Z01-2
1400W*1400D*1100H
Top 1400



MS-Z01-4
2800W*1400D*1100H
Top 1400



MS-Z01-6
4200W*1400D*1100H
Top 1400



MS-Z01-6
4200W*1400D*1100H
Top 1400



MS-G05 800W*400D*1200H



MS-G04 800W*400D*800H



MS-G03 1200W*400D*1200H



MS-G02 1200W*400D*850H



Extendable
MS-Z02-1.2
1200W*1200D*1100H
MS-Z02-1.4
1400W*1200D*1100H



MS-Z02-2-12 1200W*1200D*750H
Top 1200
MS-Z02-2-14 1400W*1200D*750H
Top 1400



MS-Z02-4-12 2400W*1200D*750H
Top 1200
MS-Z02-4-14 2800W*1200D*750H
Top 1400



MS-Z02-4A-12 2400W*1200D*750H
Top 1200
MS-Z02-4A-14 2800W*1200D*750H
Top 1400



MS-Rolling Cabinet
400W*440D*620H



MS-Three drawer Rolling Cabinet
400*440~620



Hanging stell PC mount



MS-Z02-6-12 3600W*1200D*750H
Top 1200
MS-Z02-6-14 4200W*1200D*750H
Top 1400



MS-Z02-6-14 4200W*1200D*750H
Top 1400



MS-C01-12 1200W*600D*450H
MS-C01-14 1400W*600D*450H



MS-C01-06 600W*600D*450H



MS-Z03-2 2800W*1800D*750H



MS-Z04-2 3000W*1600D*750H



S149-1 W890*D840*H740



S149-3 W1930*D840*H740



MS-H01-36 3600W*1400D*750H
MS-H01-30 3000W*1400D*750H



MS-H02-24 2400W*1200D*750H
MS-H02-20 2000W*1000D*750H



MS-H03-27 2700W*1020D*750H
MS-H03-24 2400W*1020D*750H
MS-H03-18 1800W*900D*750H



MS-H04 900*750



Z-E2306H



Z-E2306



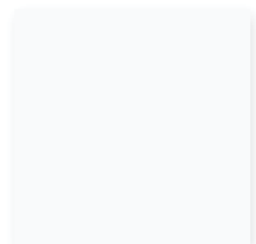
Z-D2306

// Color material craftsmanship

Board



Fresh Ash Wood



NariMWhite

Wood Leg



Fresh Ash Wood

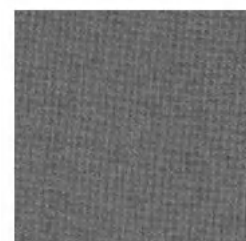


TS3614-1
Dark Grey Spray Print

Screen



Green



Grey

The above colors are recommended options. For custom color requests, please contact our sales team for further information.

H O



Fashionable / Minimalist / User-Friendly / Practical

CONCEPT

The post-90s and post-00s have entered the workplace,
has become the backbone of the workplace,
Compared to the beginning of this century,
At present, the social economy and living standards of residents have been quite developed and high-quality,
Our cultural and artistic development is also maturing.
The new generation of trendy children has formed requirements for aesthetics,
They have considerable requirements for corporate culture and working environment.
This has also become a key factor in the stability of human resources in today's enterprises.
How to improve employee satisfaction and loyalty has become a new challenge.
In the situation of white-hot market,
We do not forget our original intention, return to the source point,
To design that truly respects the user,
Stylish and cost-effective products.
Inspired by the concept of "Zen" in the Chinese East,
In harmony with all things,
It is also the starting point of the HO series.
The "O" represents thinking about the essence,
It also represents a harmonious view of the world,
It is also the basic design element of the HO series - the table frame adopts a combination of 2 different specifications of round tubes.
The result is a workstation system with a modern floating feel and a soft shape.







Quick circuit connection

The power channel looks sleek and uncluttered while being easy to use, and the design provides ample cable space for a variety of power outlets in different regions to meet future technical needs.



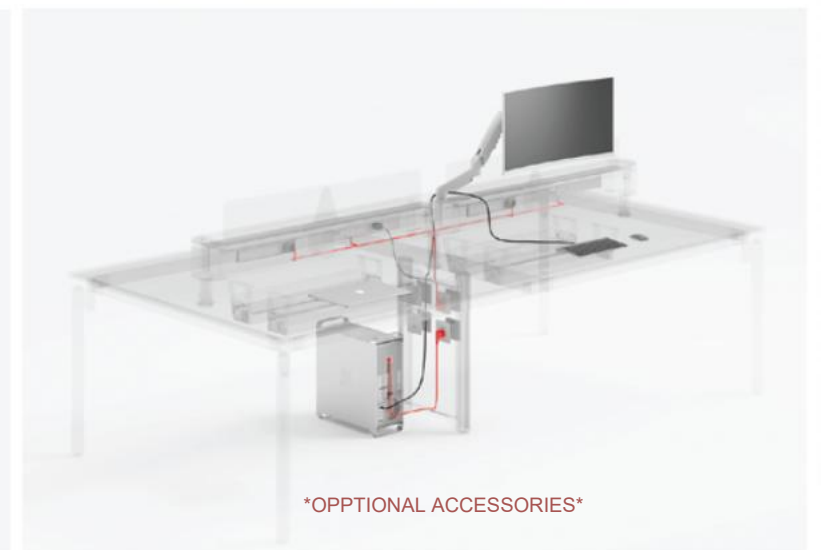


Excellent Power Management, elegant work
 Wire box integration upper and lower dual power supply, USB interface, etc.
 Everything you need for different devices.



Excellent Power Management, elegant work

Wire box integration upper and lower dual power supply, USB interface, etc.
Everything you need for different devices.



OPTIONAL ACCESSORIES

Simple and stylish, with excellent power & management system, and storage function, the HO multi-function workstation is equally neat and ensuring an excellent user experience, it makes the desktop more tidy and the work more handy and decent.



Sliding screen divider that can switch between focus and collaboration modes.



Movable work permit, hooks



Display function slots and wiring holes



The desk has a magnetic pen holder, a book stand, and the power supply is placed under the desk.











Multifunctional screen island

The fashionable color-block design makes the multi-functional screen more beautiful and personalized, not only can play the role of shielding and partitioning, but also has the function of storing objects and plugging in the power supply.





Diverse social spaces

This three-person six-person workstation is a typical example of diversified space design, using innovative concepts that integrate ergonomics, teamwork and individual needs into the workstation layout; This makes the space more flexible and diverse.









Intelligent control, minimalist design

The conference table is equipped with a power rail to bring convenient and efficient use to the meeting place.



// Standard Product Unit



H0-T01-22 2200x1800x750
H0-T01-20 2000x1800x750
H0-T01-18 1800x1800x750



H0-Z01-D1-12 1200x600x750
H0-Z01-D1-14 1400x600x750
H0-Z01-D1-15 1500x700x750



H0-Z01-D2-12 2400x600x750
H0-Z01-D2-14 2800x600x750
H0-Z01-D2-15 3000x700x750



H0-Z01-2-12 1200x1200x750
H0-Z01-2-14 1400x1200x750
H0-Z01-2-15 1500x1400x750



H0-Z01-4-12 1200x1200x750
H0-Z01-2-14 1400x1200x750
H0-Z01-2-15 1500x1400x750



H0-Z01-6-12 3600x1200x750
H0-Z01-6-14 4200x1200x750
H0-Z01-6-15 4500x1400x750



H0-Z02-D1-12 1200x600x750
H0-Z02-D1-14 1400x600x750
H0-Z02-D1-15 1500x700x750



H0-Z02-D2-12 2400x600x750
H0-Z02-D2-14 2800x600x750
H0-Z02-D2-15 3000x700x750



Extendable Table
H0-Z02-12 1200x1200x750
H0-Z02-14 1400x1200x750
H0-Z02-15 1500x1400x750



H0-Z02-2-12 1200x1200x750
H0-Z02-2-14 1400x1200x750
H0-Z02-2-15 1500x1400x750



H0-Z02-4-12 2400x1200x750
H0-Z02-4-14 2800x1200x750
H0-Z02-4-15 3000x1400x750



H0-Z02-6-12 3600x1200x750
H0-Z02-6-14 4200x1200x750
H0-Z02-6-15 4500x1400x750



H0-Z03-3 2678x2320x750



H0-Z03-6 4640x2678x750



H0-Z03X-6 4640x2678x750



H0-Z04-12-2 1200x1200x750
H0-Z04-14-2 1400x1200x750
H0-Z04-15-2 1500x1400x750



Extendable Table
H0-Z04-12 1200x1200x750
H0-Z04-14 1400x1200x750
H0-Z04-15 1500x1400x750



H0-Z04-12-4 2400x1200x750
H0-Z04-14-4 2800x1200x750
H0-Z04-15-4 3000x1400x750



H0-Z04-12-6 3600x1200x750
H0-Z04-14-6 4200x1200x750
H0-Z04-15-6 4500x1400x750

// Standard Product Unit



H0-Z04-12 1200x600x750
H0-Z04-14 1400x600x750



H0-Z05-2-12 1600x2800x1100
H0-Z05-2-14 1800x2800x1100



H0-Z05-1-12 1600x1400x1100
H0-Z05-1-14 1800x1400x1100



H0 Rolling Cabinet
300x500x570



Two-Drawer Rolling Cabinet
400x450x450



H0-S01 1200x600x1100



H0-S02 2200x1200x1100



S135-1 1100x720x785



S135-3 2200x720x785



H0-C01 1300x700/850x380/480



H0-C02 1200x700x380



H0-H01-24 2400*1200*750
H0-H01-18 1800x900x750



H0-H01-24 2400x1200x750
H0-H01-28 2800x1200x750
H0-H01-32 3200x1200x750
H0-H01-36 3600x1200x750



H0-H02-06 600x600x750
H0-H02-08 800x800x750
H0-H02-10 1000x1000x750



H0-G01 2400x420x1150



H0-G02 2400x400x1900



H0-G03 800x400x1900



H0-G04 高柜 800x400x1900

HO -

// Standard Product Unit



H0-G05 800x400x1900



H0-G06 800x400x1900



H0-G07 800x400x1200



H0-G08 800x400x1200



H0-Mobile Whiteboard
1200x470x1700



DQ-1918AD-H 600*660*1180-1280



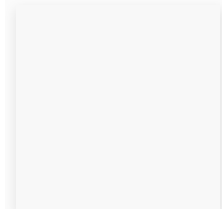
DQ-1918BD-H 600*660*1010-1110

// Color material craftsmanship

Board



Walnut
Straight Grain

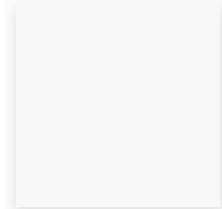


Warm white

Steel Leg



Matte Grey



Warm white

Screen



Light Grey



Arid Earth Dye

OFFICE FURNITURE